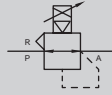




Digital electro pneumatic regulator

EVD-1000 Series

JIS symbol



Specifications

Item	EVD-1100*08 Analog output (*...0/1/2)	EVD-1100-P08 Parallel	EVD-1500*08 Analog output (*...0/1/2)	EVD-1500-P08 Parallel	EVD-1900*08 Analog output (*...0/1/2)	EVD-1900-P08 Parallel
Working fluid	Clean compressed air (JIS B 8392-1: 2012 (ISO 8573-1: 2010) [1:3:2] or equivalent)					
Max. working pressure	160 kPa		700 kPa		1000 kPa	
Min. working pressure	Set pressure +50 kPa			Set pressure +100kPa		
Proof pressure	Inlet	240 kPa	1050 kPa	1500 kPa		
	Output side	150 kPa	750 kPa	1350 kPa		
Pressure control range *1	0 to 100 kPa		0 to 500 kPa		0 to 900 kPa	
Power supply voltage	24 VDC ± 10% (stabilized power supply with ripple rate 1% or less)					
Current consumption	0.15 A or less (0.6 A or less rush current when the power is turned ON)					
Input signal (input impedance)	0-10 VDC(6.7kΩ)	10bit	0-10 VDC(6.7kΩ)	10bit	0-10 VDC(6.7kΩ)	10bit
	0-5 VDC(10kΩ)		0-5 VDC(10kΩ)		0-5 VDC(10kΩ)	
	4-20 mADC (250Ω)		4-20 mADC (250Ω)		4-20 mADC (250Ω)	
Preset input	8 points	No	8 points	No	8 points	No
Output signal *2	Output accuracy: ±6% F.S. or less, analog output: 1 to 5 VDC (connecting load impedance 500 kΩ and over)					
	Switch output: NPN or PNP open collector output, 30 V or less and 50 mA or less, voltage drop 2.4 V or less, PLC/relay compatible					
Error output signal	NPN or PNP open collector output, 30 V or less and 50 mA or less, voltage drop 2.4 V or less, PLC/relay compatible					
Direct memory setting	1 to 100 kPa		5 to 500 kPa		9 to 900 kPa	
	(Min. setting width 1 kPa/setting resolution 1 kPa)		(Min. setting width 1 kPa/setting resolution 1 kPa)		(Min. setting width 1 kPa/setting resolution 2 kPa)	
Pressure display	Display method	7-segment LED 3 digits, indicator accuracy: ±2% F.S. or less				
	Display range	0 to 100 kPa	0 to 500 kPa	0 to 900 kPa		
	Display resolution	1 kPa	1 kPa	1 kPa		
Hysteresis *3			0.5% F.S. or less			
Linearity *3			±0.3% F.S. or less			
Resolution *3			0.2% F.S. or less			
Repeatability *3			0.3% F.S. or less			
Temperature characteristics	Zero point fluctuation	±0.15% F.S./°C or less				
	Span fluctuation	±0.07% F.S./°C or less				
Max. flow rate (ANR) *4	60 l/min		400 l/min			
Step response *5	No load		0.2 sec. or less			
Vibration resistance	98m/s ² or less					
Ambient temperature	5 to 50°C					
Fluid temperature	5 to 50°C					
Port size	Port size option 08...Rc1/4, 08G...G1/4, 08N...NPT1/4					
Mounting orientation	Free					
Weight	250 g					
Protection circuit	Power reverse connection protection, switch output reverse connection protection, switch output load short-circuit protection					

*1: There is 1% F.S. or less residual pressure when the input signal is 0%. (EVD-1100: 1 kPa, EVD-1500: 5 kPa, EVD-1900: 9 kPa)

*2: Select the analog output or switch output.

*3: The condition of the values above is: 24 ± 0.1 VDC power supply voltage, 25 ± 3°C ambient temperature, no load, working pressure of +50 kPa max. control pressure (EVD-1100)/+100 kPa (EVD-1500, 1900), and 10 to 90% control pressure.

In addition, when the secondary side is a closed circuit, pressure fluctuations will occur if the product is used for blowing or for similar applications.

*4: The characteristics where working pressure is maximum and control pressure is maximum are shown.

*5: The value above is obtained at the max. working pressure and when the step amount changes from

50% F.S. → 100% F.S.
50% F.S. → 60% F.S.
50% F.S. → 40% F.S.

Specifications for components for rechargeable battery production (Catalog No. CC-1226A)

EVD1500/1900—[Input specifications/port size/output specifications]— [Option] — 3 — **P4**

EVD3500/3900—[Input specifications/port size/output specifications]— [Option] — 3 — **P4**

Contact your nearest CKD sales office or dealer for details.

How to order

EVD-1 **500** - **0** **08** **AN** - **C1B1** - **3**

A Pressure control range

B Input signal

C Port size

D Output signal

E Option

F Power supply voltage

● Discrete option (cable, bracket) model No.

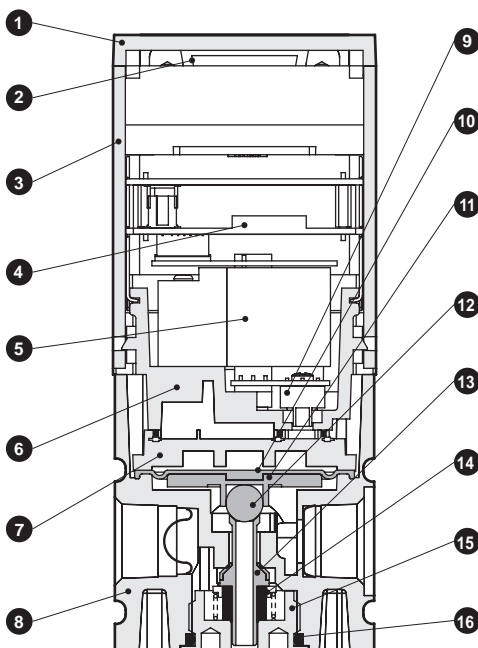
EVD- **C1**

E Option

Code	Description
A Pressure control range *1	
100	0 - 100 kPa
500	0 - 500 kPa
900	0 - 900 kPa
B Input signal	
0	0 - 10 VDC
1	0 - 5 VDC
2	4 to 20 mA DC
P	Parallel 10 bit
C Port size	
08	Rc1/4
08G	G1/4
08 N	NPT1/4
D Output signal	
AN	1 to 5 V analog, error (NPN)
AP	1 to 5 V analog, error (PNP)
SN	Switch (NPN), error (NPN)
SP	Switch (PNP), error (PNP)
E Option	
Cable option	
Blank	No
C1	Analog 9-conductor, 1 m cable
C3	Analog 9-conductor, 3m cable
P1	Parallel 15-conductor, cable 1 m
P3	Parallel 15-conductor, 3m cable
Bracket is an included option	
Blank	No
B1	B-bracket, floor mounted
L1	L-bracket, wall mounted
F Power supply voltage	
3	24 VDC

*1: There is 1% F.S. or less residual pressure when the input signal is 0%.

Internal structure and parts list



Part No.	Part name	Material
1	Lid	PBT resin
2	D-sub-connector	-
3	Housing	ABS resin
4	Controller board	-
5	3-way valve	-
6	Valve base	Polyphenylene sulfide resin
7	Pilot chamber	Polyphenylene sulfide resin
8	Body	Aluminum alloy die-casting
9	Pressure sensor	-
10	Diaphragm	Special nitrile rubber
11	Relief seat	Aluminum alloy
12	Steel ball (exhaust valve)	Stainless steel
13	Valve	Special nitrile rubber, stainless steel
14	Bottom rubber	Silicone rubber
15	Bottom plug	Brass, electroless nickeling
16	O-ring	Fluoro rubber

Cannot be disassembled

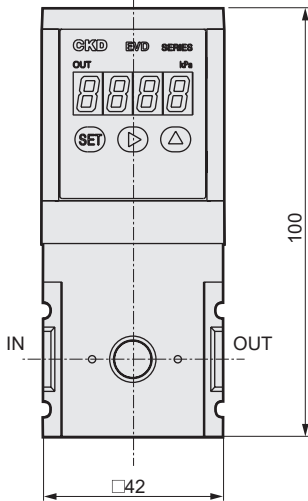
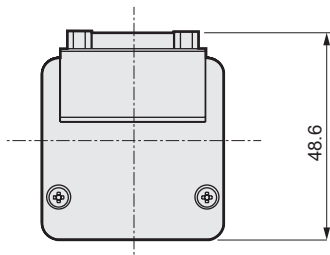
F.R.L.
F.R.
F (Filtr)
R (Reg)
L (Lub)
Drain Separ
Mech Press SW
Res press exh valve
SlowStart
Anti-bac/Bac-remove Filtr
Film Resist FR
Oil-ProhR
Med Press FR
No Cu/ PTFE FRL
Outdrs FRL
Adapter Joiner Press Gauge
CompFRL
LgFRL
PrecsR
VacF/R
Clean FR
ElecPneuR
AirBoost
Speed Ctrl
Silncr
CheckV/ other
Fit/Tube
Nozzle
Air Unit
PresCompn
Electro Press SW
ContactSW
AirSens
PresSW Cool
Air Flo Sens/Ctrl
WaterR/Sens
TotAirSys (Total Air)
TotAirSys (Gamma)
Gas generator
RefrDry
DesicDry
HiPolymDry
MainFiltr
Dischrg etc
Ending

EVD-1000 Series

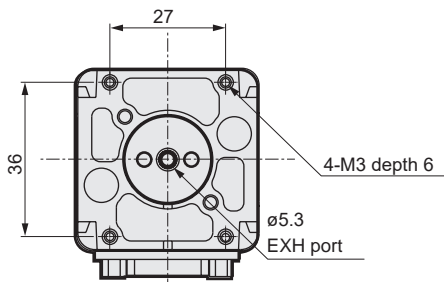
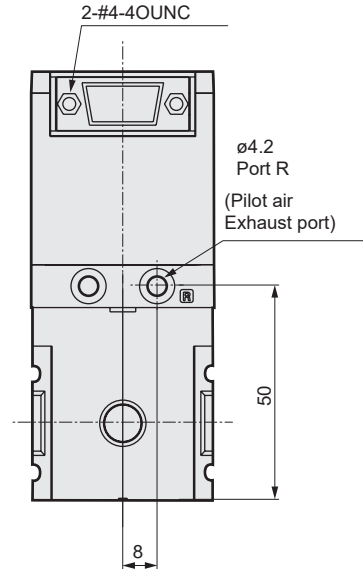
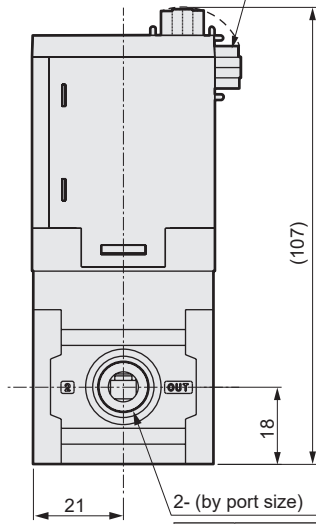


Dimensions

- F.R.L.
- F.R.
- F (Filtr)
- R (Reg)
- L (Lub)
- Drain Separ
- Mech Press SW
- Res press exh valve
- SlowStart
- Anti-bac/Bac-remove Filtr
- Film Resist FR
- Oil-ProhR
- Med Press FR
- No Cu/PTFE FRL
- Outdrs FRL
- Adapter Joiner
- Press Gauge
- CompFRL
- LgFRL
- PrecsR
- VacF/R
- Clean FR
- ElecPneuR
- AirBoost
- Speed Ctrl
- Silncr
- CheckV/other
- Fit/Tube
- Nozzle
- Air Unit
- PrecsCompn
- Electro Press SW
- ContactSW
- AirSens
- PresSW Cool
- Air Flo Sens/Ctrl
- WaterRtSens
- TotAirSys (Total Air)
- TotAirSys (Gamma)
- Gas generator
- RefrDry
- DesiccDry
- HiPolymDry
- MainFiltr
- Dischrg etc
- Ending



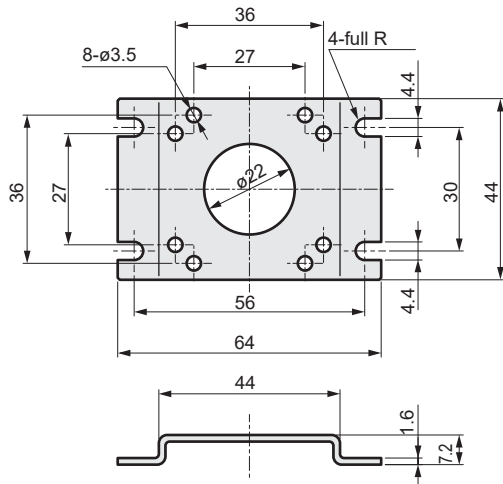
D-sub-connector 15-pin/plug (male)



08	Rc1/4
08G	G1/4
08 N	NPT1/4

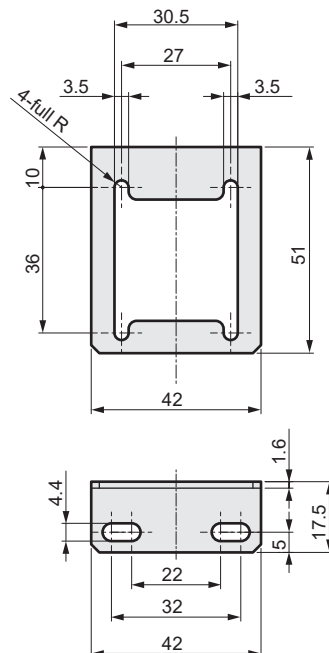
Optional dimensions

● B-bracket (-B1): floor mounted



Material: SPCC
Ni plated
Weight: 32 g

● L-bracket (-L1): Wall mounted

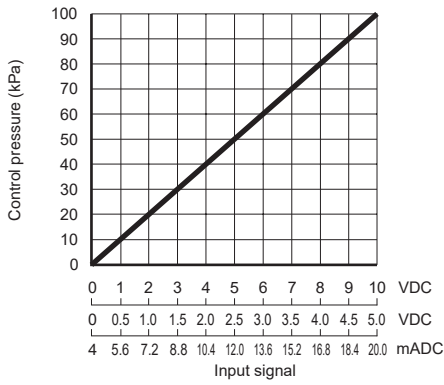


Material: SPCC
Ni plated
Weight: 21 g

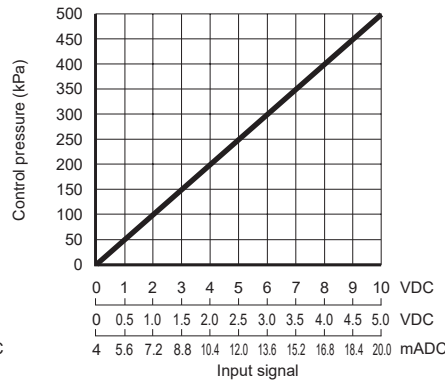
* Refer to page 595 for details of cable option dimensions.

I/O characteristics

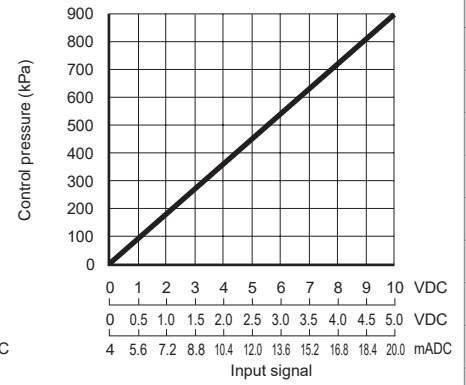
● EVD-1100



● EVD-1500

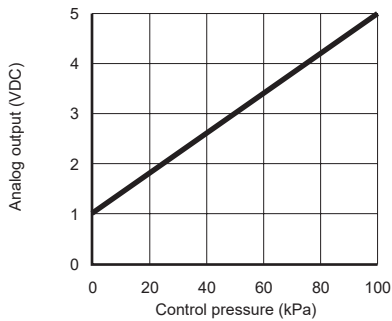


● EVD-1900

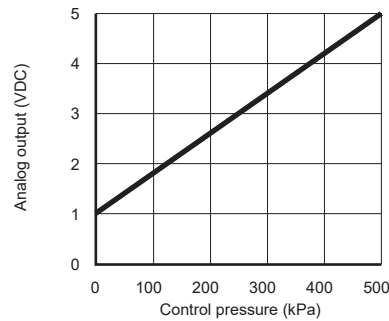


Analog output (analog output only: model No. AN/AP)

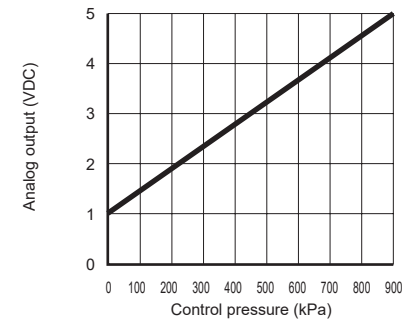
● EVD-1100



● EVD-1500

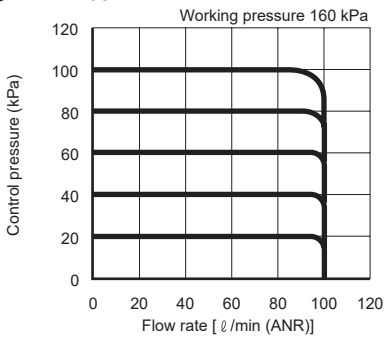


● EVD-1900

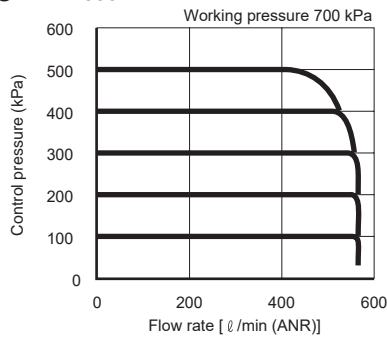


Flow characteristics

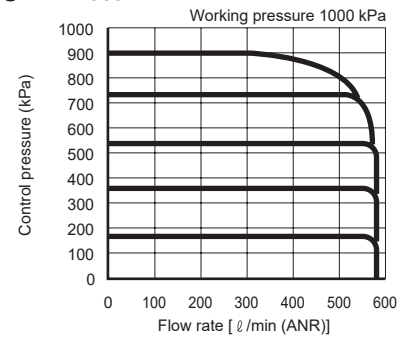
● EVD-1100



● EVD-1500

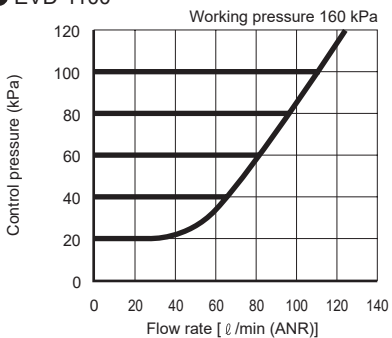


● EVD-1900

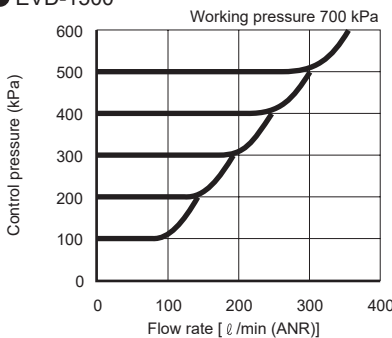


Relief characteristics

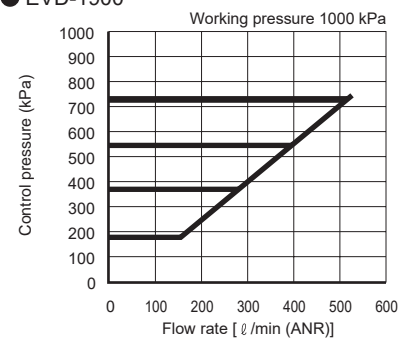
● EVD-1100



● EVD-1500



● EVD-1900



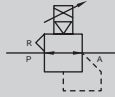
- F.R.L.
- F.R.
- F (Filtr)
- R (Reg)
- L (Lub)
- Drain Separ
- Mech Press SW
- Res press exh valve
- SlowStart
- Anti-bac/Bac-remove Filtr
- Film Resist FR
- Oil-ProhR
- Med Press FR
- No Cu/ PTFE FRL
- Outdrs FRL
- Adapter Joiner Press Gauge
- CompFRL
- LgFRL
- PrecsR
- VacF/R
- Clean FR
- ElecPneuR
- AirBoost
- Speed Ctrl
- Silncr
- CheckV/ other
- Fit/Tube
- Nozzle
- Air Unit
- PrecsCompn
- Electro Press SW
- ContactSW
- AirSens
- PresSW Cool
- Air Flo Sens/Ctrl
- WaterR/Sens
- TotAirSys (Total Air)
- TotAirSys (Gamma)
- Gas generator
- RefrDry
- DesicDry
- HiPolymDry
- MainFiltr
- Dischrg etc
- Ending



Digital electro pneumatic regulator

EVD-3000 Series

JIS symbol



Specifications

Item	EVD-3100-08 <input type="checkbox"/> EVD-3100-10 <input type="checkbox"/> Analog output (*...0/1/2)		EVD-3100-P08 <input type="checkbox"/> EVD-3100-P10 <input type="checkbox"/> Parallel		EVD-3500-08 <input type="checkbox"/> EVD-3500-10 <input type="checkbox"/> Analog output (*...0/1/2)		EVD-3500-P08 <input type="checkbox"/> EVD-3500-P10 <input type="checkbox"/> Parallel		EVD-3900-08 <input type="checkbox"/> EVD-3900-10 <input type="checkbox"/> Analog output (*...0/1/2)		EVD-3900-P08 <input type="checkbox"/> EVD-3900-P10 <input type="checkbox"/> Parallel		
	Working fluid	Clean compressed air (JIS B 8392-1: 2012 (ISO 8573-1: 2010) [1:3:2] or equivalent)											
Max. working pressure	160 kPa			700 kPa			1000 kPa						
Min. working pressure	Set pressure +50 kPa				Set pressure +100kPa								
Proof pressure	Inlet	240 kPa			1050 kPa			1500 kPa					
	Output side	150 kPa			750 kPa			1350 kPa					
Pressure control range *1	0 to 100 kPa			0 to 500 kPa			0 to 900 kPa						
Power supply voltage	24 VDC ± 10% (stabilized power supply with ripple rate 1% or less)												
Current consumption	0.15 A or less (0.6 A or less rush current when the power is turned ON)												
Input signal (input impedance)	0-10 VDC (6.7 kΩ)				0-10 VDC (6.7 kΩ)				0-10 VDC (6.7 kΩ)				
	0-5 VDC (10 kΩ)		10bit		0-5 VDC (10 kΩ)		10bit		0-5 VDC (10 kΩ)		10bit		
	4-20 mAADC (250 Ω)				4-20 mAADC (250 Ω)				4-20 mAADC (250 Ω)				
Preset input	8 points			No			8 points			No			
Output signal *2	Output accuracy: ±6% F.S. or less, analog output: 1 to 5 VDC (connecting load impedance 500 kΩ and over)												
	Switch output: NPN or PNP open collector output, 30 V or less and 50 mA or less, voltage drop 2.4 V or less, PLC/relay compatible												
Error output signal	NPN or PNP open collector output, 30 V or less and 50 mA or less, voltage drop 2.4 V or less, PLC/relay compatible												
Direct memory setting	1 to 100 kPa (Min. setting width 1 kPa/setting resolution 1 kPa)			5 to 500 kPa (Min. setting width 1 kPa/setting resolution 1 kPa)			9 to 900 kPa (Min. setting width 1kPa/setting resolution 2kPa)						
	7-segment LED 3 digits, indicator accuracy: ±2% F.S. or less												
Pressure display	Display method												
	Display range	0 to 100 kPa			0 to 500 kPa			0 to 900 kPa					
	Display resolution	1 kPa			1 kPa			1 kPa					
Hysteresis *3	0.5% F.S. or less												
Linearity *3	±0.3% F.S. or less												
Resolution *3	0.2% F.S. or less												
Repeatability *3	0.3% F.S. or less												
Temperature characteristics	Zero point fluctuation	±0.15% F.S./°C or less											
	Span fluctuation	±0.07% F.S./°C or less											
Max. flow rate (ANR) *4	700 l/min				1500 l/min								
Step response *5	No load	0.2 sec. or less											
Vibration resistance	98m/s ² or less												
Ambient temperature	5 to 50°C												
Fluid temperature	5 to 50°C												
Port size	IN, OUT port	Port size option 08...Rc1/4, 10...Rc3/8, 08G...G1/4, 10G...G3/8, 08N...NPT1/4, 10N...NPT3/8											
	EXH port	Rc3/8, G3/8, NPT3/8											
Mounting orientation	Free												
Weight	450 g												
Protection circuit	Power reverse connection protection, switch output reverse connection protection, switch output load short-circuit protection												

*1: There is 1% F.S. or less residual pressure when the input signal is 0%. (EVD-3100: 1 kPa, EVD-3500: 5 kPa, EVD-3900: 9 kPa)

*2: Select the analog output or switch output.

*3: The condition of the values above is: 24 ± 0.1 VDC power supply voltage, 25 ± 3°C ambient temperature, no load, working pressure of +50 kPa max. control pressure (EVD-3100)/+100 kPa (EVD-3500, 3900), and 10 to 90% control pressure. In addition, when the secondary side is a closed circuit, pressure fluctuations will occur if the product is used for blowing or for similar applications.

*4: The characteristics where working pressure is maximum and control pressure is maximum are shown.

*5: The value above is obtained at the max. working pressure and when the step amount changes from

50% F.S. → 100% F.S.
50% F.S. → 60% F.S.
50% F.S. → 40% F.S.

How to order

EVD-3 **500** - **0** **08** **AN** - **C1B3** - **3**

A Pressure control range

B Input signal

C Port size (IN, OUT)

D Output signal

E Option

F Power supply voltage

● Discrete option (cable, bracket) model No.

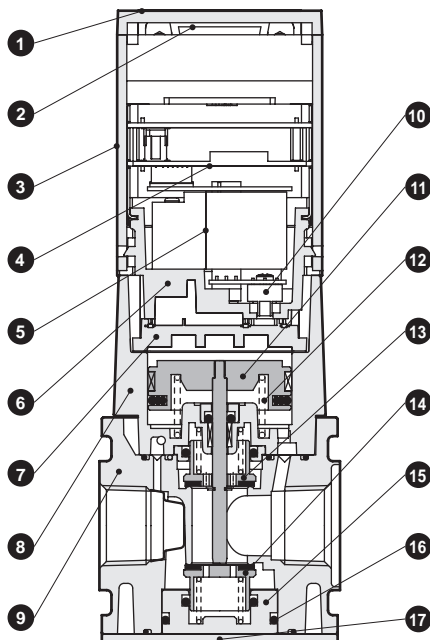
EVD- **C1**

E Option

Code	Description
A Pressure control range *1	
100	0 - 100 kPa
500	0 - 500 kPa
900	0 - 900 kPa
B Input signal	
0	0 - 10 VDC
1	0 - 5 VDC
2	4 to 20 mA DC
P	Parallel 10 bit
C Port size (IN, OUT)	
08	Rc1/4
10	Rc3/8
08G	G1/4
10G	G3/8
08 N	NPT1/4
10 N	NPT3/8
D Output signal	
AN	1 to 5 V analog, error (NPN)
AP	1 to 5 V analog, error (PNP)
SN	Switch (NPN), error (NPN)
SP	Switch (PNP), error (PNP)
E Option	
Cable option	
Blank	No
C1	Analog 9-conductor, 1 m cable
C3	Analog 9-conductor, 3m cable
P1	Parallel 15-conductor, cable 1 m
P3	Parallel 15-conductor, 3m cable
Bracket is an included option	
Blank	No
B3	B-bracket, floor mounted
L3	L-bracket, wall mounted
F Power supply voltage	
3	24 VDC

*1: There is 1% F.S. or less residual pressure when the input signal is 0%.

Internal structure and parts list



Part No.	Part name	Material
1	Lid	PBT resin
2	D-sub-connector	-
3	Housing	ABS resin
4	Controller board	-
5	3-way valve	-
6	Valve base	Polyphenylene sulfide resin
7	Pilot chamber	Polyphenylene sulfide resin
8	Piston body assembly	Aluminum alloy die-casting, etc.
9	Body	Aluminum alloy die-casting
10	Pressure sensor	-
11	Piston assembly	Aluminum alloy, stainless steel, etc.
12	Spring	Stainless steel
13	Top valve	Brass, special nitrile rubber
14	Bottom valve	Brass, special nitrile rubber
15	Bottom cap	Brass
16	O-ring	Nitrile rubber
17	Base plate	Steel plate

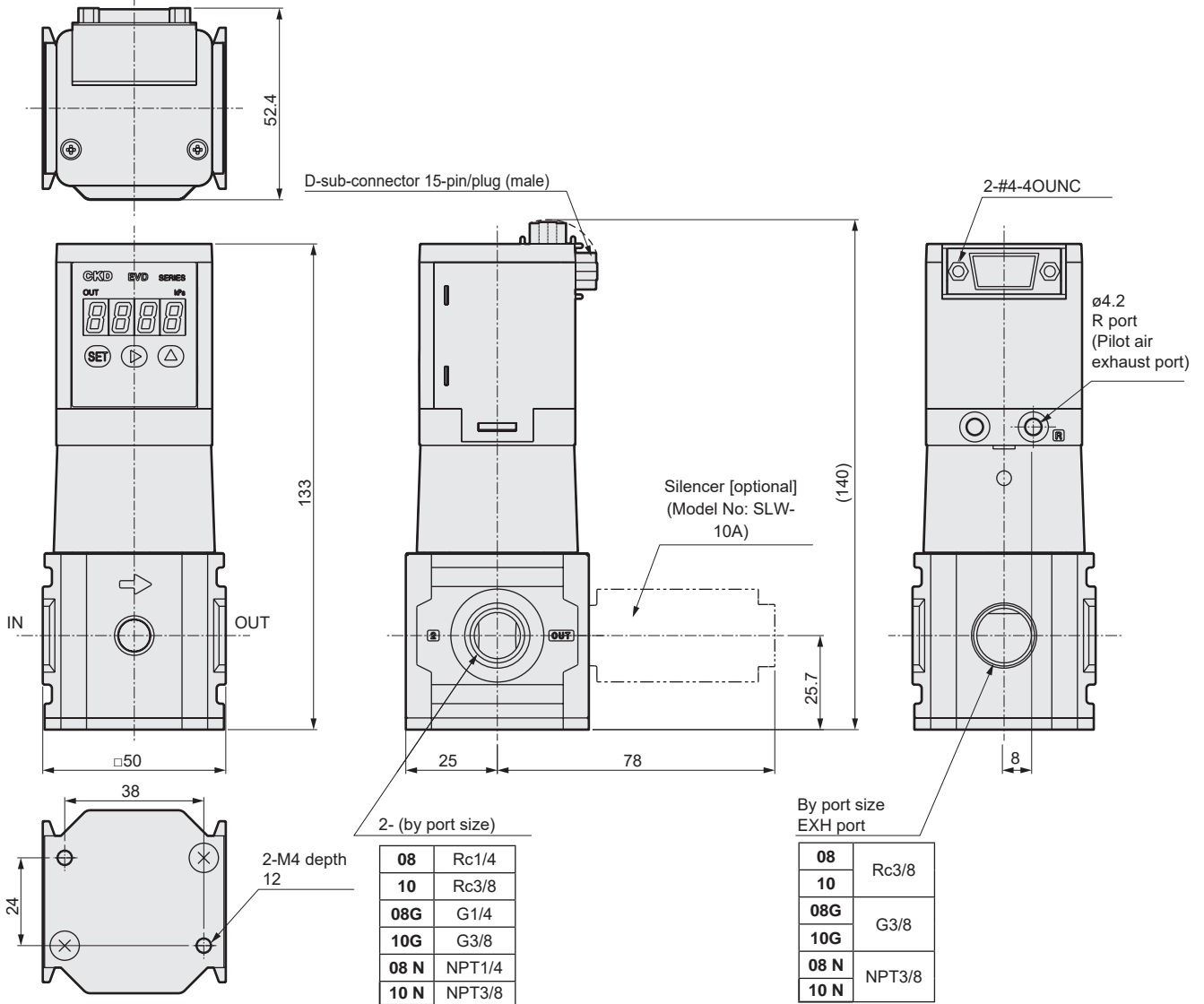
Cannot be disassembled

EVD-3000 Series



Dimensions

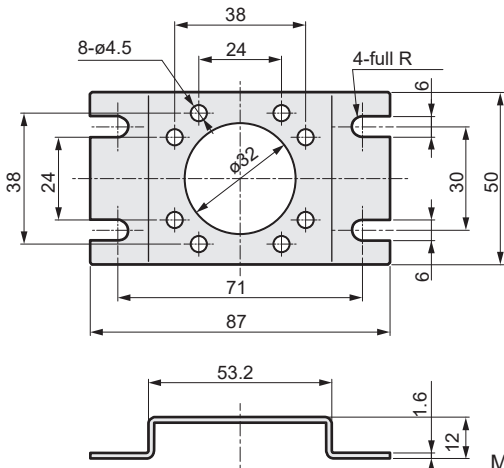
- F.R.L.
- F.R.
- F (Filtr)
- R (Reg)
- L (Lub)
- Drain Separ
- Mech Press SW
- Res press exh valve
- SlowStart
- Anti-bac/Bac-remove Filtr
- Film Resist FR
- Oil-ProhR
- Med Press FR
- No Cu/ PTFE FRL
- Outdrs FRL
- Adapter Joiner
- Press Gauge
- CompFRL
- LgFRL
- PrecsR
- VacF/R
- Clean FR
- ElecPneUR
- AirBoost
- Speed Ctrl
- Silncr
- CheckV/ other
- Fit/Tube
- Nozzle
- Air Unit
- PrecsCompn
- Electro Press SW
- ContactSW
- AirSens
- PresSW Cool
- Air Flo Sens/Ctrl
- WaterRiSens
- TotAirSys (Total Air)
- TotAirSys (Gamma)
- Gas generator
- RefrDry
- DesicDry
- HiPolymDry
- MainFiltr
- Dischrg etc
- Ending



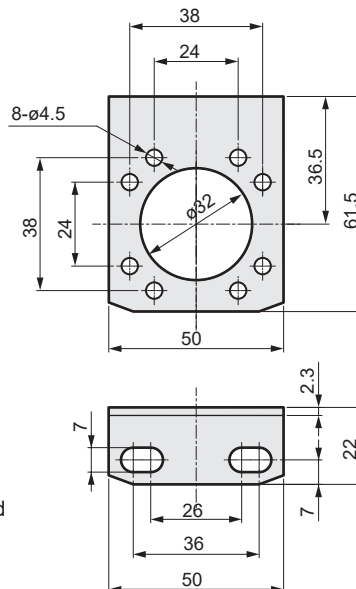
Optional dimensions

● B-bracket (-B3): Floor mounted

● L-bracket (-L3): Wall mounted



Material: SPCC
Ni plated
Weight: 48 g

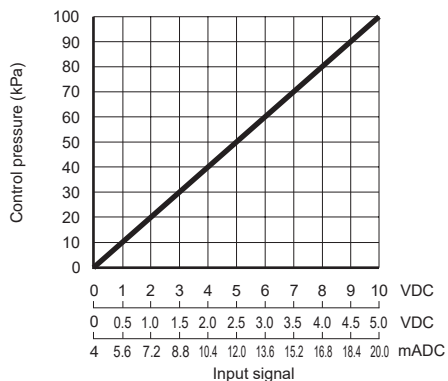


Material: SPCC
Ni plated
Weight: 51 g

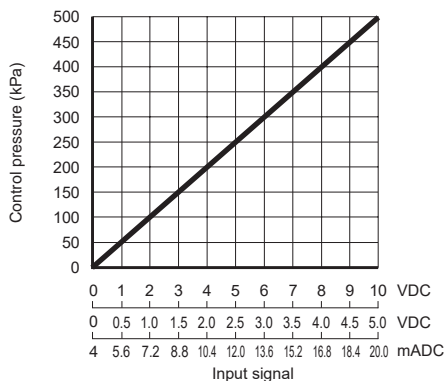
* Refer to page 595 for details of cable option dimensions.

I/O characteristics

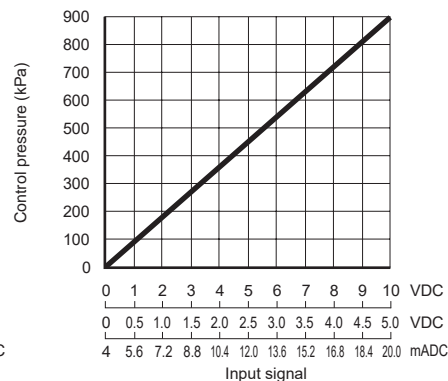
● EVD-3100



● EVD-3500

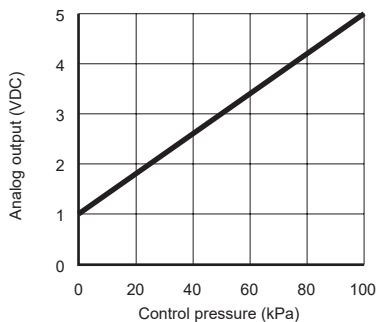


● EVD-3900

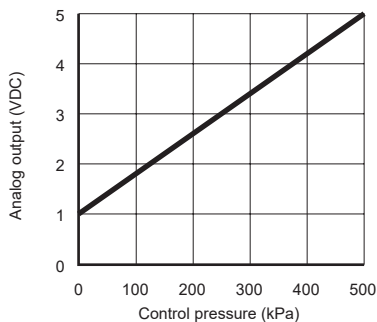


Analog output (analog output only: model No. AN/AP)

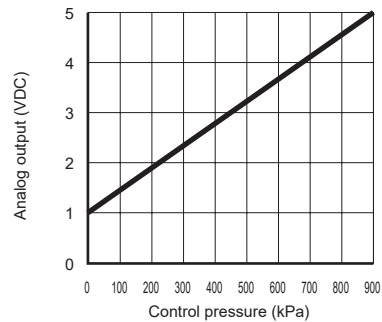
● EVD-3100



● EVD-3500



● EVD-3900



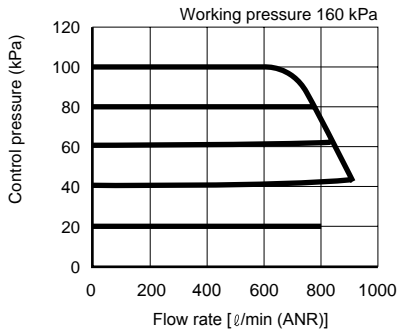
F.R.L.
F.R.
F (Filtr)
R (Reg)
L (Lub)
Drain Separ
Mech Press SW
Res press exh valve
SlowStart
Anti-bac/Bac-remove Filtr
Film Resist FR
Oil-ProhR
Med Press FR
No Cu/ PTFE FRL
Outdrs FRL
Adapter Joiner Press Gauge
CompFRL
LgFRL
PrecsR
VacF/R
Clean FR
ElecPneuR
AirBoost
Speed Ctrl
Silncr
CheckV/ other
Fit/Tube
Nozzle
Air Unit
PresCompn
Electro Press SW
ContactSW
AirSens
PresSW Cool
Air Flo Sens/Ctrl
WaterRISens
TotAirSys (Total Air)
TotAirSys (Gamma)
Gas generator
RefrDry
DesicDry
HiPolymDry
MainFiltr
Dischrg etc
Ending

EVD-3000 Series

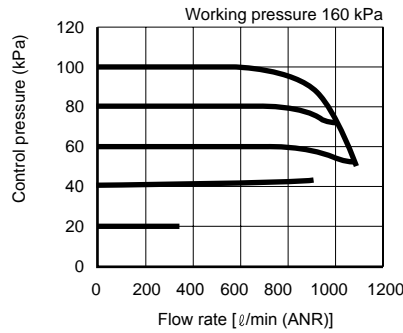
- F.R.L.
- F.R.
- F (Filtr)
- R (Reg)
- L (Lub)
- Drain Separ
- Mech Press SW
- Res press exh valve
- SlowStart
- Anti-bac/Bac-remove Filtr
- Film Resist FR
- Oil-ProhR
- Med Press FR
- No Cu/PTFE FRL
- Outdrs FRL
- Adapter Joiner
- Press Gauge
- CompFRL
- LgFRL
- PrecsR
- VacF/R
- Clean FR
- ElecPneuR
- AirBoost
- Speed Ctrl
- Silncr
- CheckV/other
- Fit/Tube
- Nozzle
- Air Unit
- PrecsCompn
- Electro Press SW
- ContactSW
- AirSens
- PresSW Cool
- Air Flo Sens/Ctrl
- WaterRiSens
- TotAirSys (Total Air)
- TotAirSys (Gamma)
- Gas generator
- RefrDry
- DesicDry
- HiPolymDry
- MainFiltr
- Dischrg etc
- Ending

Flow characteristics

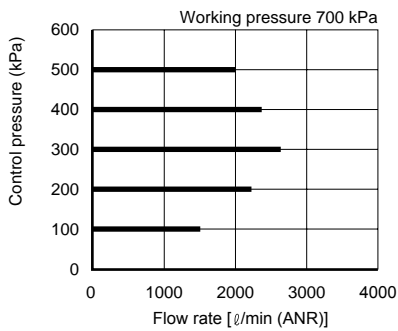
● EVD-3100-□08



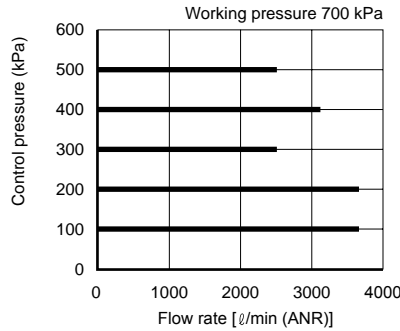
● EVD-3100-□10



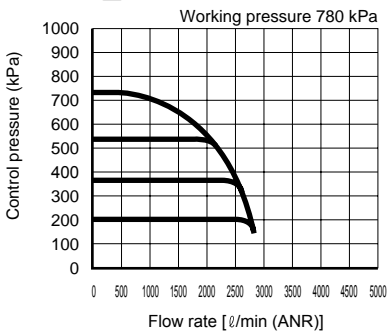
● EVD-3500-□08



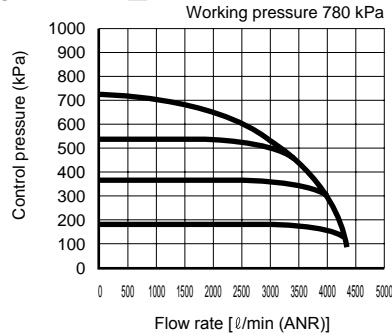
● EVD-3500-□10



● EVD-3900-□08

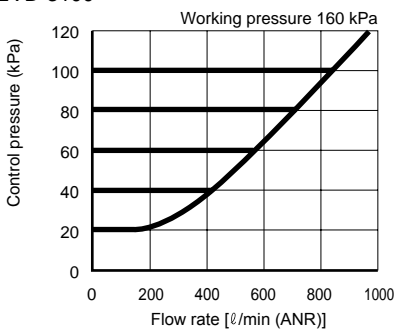


● EVD-3900-□10

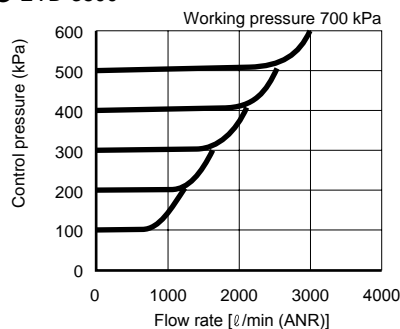


Relief characteristics

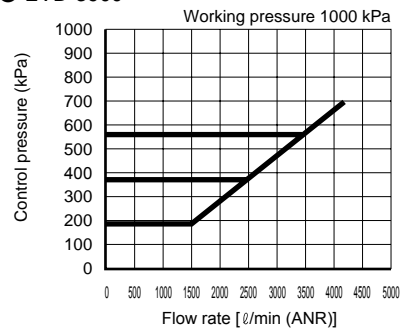
● EVD-3100



● EVD-3500

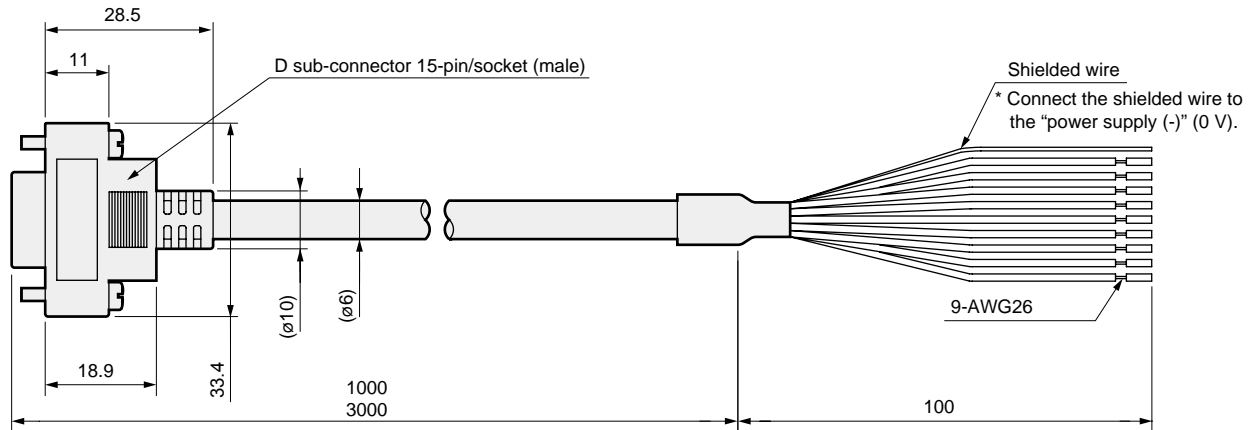


● EVD-3900



Cable optional dimensions

● EVD-C1,EVD-C3

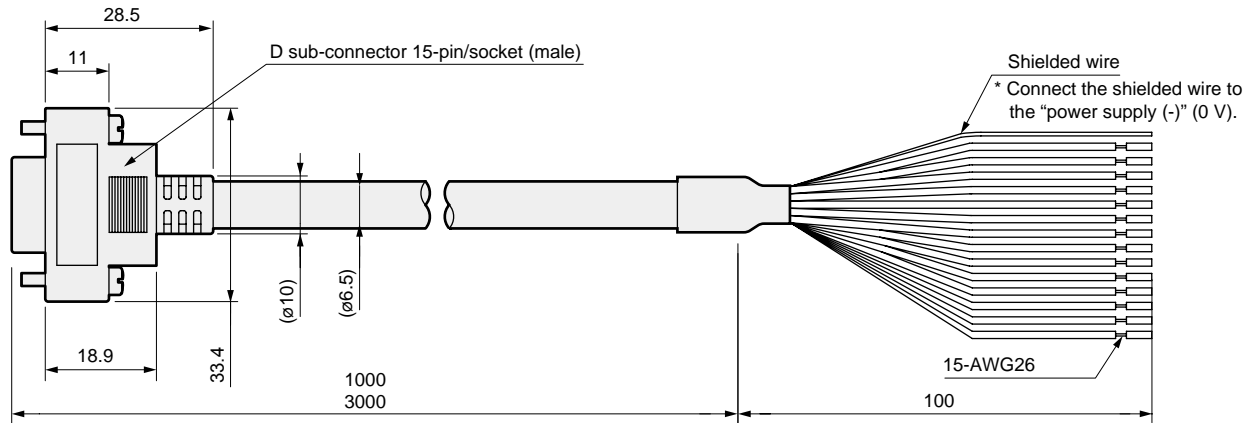


Wire material	Tinned annealed copper wire
Conductor O.D.	Approx. 0.48
Outer diameter of insulator	0.88

D sub-socket pin No.	1	2	3	4	5	6	7	8	9	10	11	12	13	14	15	Weight g		
Insulator color	Brown	Orange	Yellow	-	Red	-	-	-	-	Gray	White	-	Green	Blue	Black	C1:67 C3:166		
Name	Preset input signal				Power supply +						Input signal		Vacant	Analog output	Switch output		Error output	Power supply - (0V)
Input	Bit 1	Bit 2	Bit 3	Vacant	+24 VDC	Vacant	Vacant	Vacant	Vacant	Common	0 to 10 VDC	0 to 5 VDC	4 to 20 mA	Vacant	Output 1 to 5 VDC		NPN or PNP output	NPN or PNP output

Note: The No. 10 pin common is the common for the preset input (pin No. 1 to 3).

● EVD-P1,EVD-P3



Wire material	Tinned annealed copper wire
Conductor O.D.	Approx. 0.48
Outer diameter of insulator	0.88

D sub-socket pin No.	1	2	3	4	5	6	7	8	9	10	11	12	13	14	15	Weight g	
Insulator color	Brown	Orange	Yellow	Purple	Red	Light blue	Pink	White (with black line)	Red (with black line)	Gray	White	Green (with black line)	Green	Blue	Black	P1:82 P3:205	
Name	Parallel input signal				Power supply +	Parallel input signal					Parallel input signal		Analog output	Switch output	Error output		Power supply - (0V)
Input	Bit 1	Bit 2	Bit 3	Bit 4	+24 VDC	Bit 5	Bit 6	Bit 7	Bit 8	Common	Bit 9	Bit 10	Output 1 to 5 VDC	NPN or PNP output	NPN or PNP output		

Note: The No. 10 pin common is the common for the parallel input signal (pin No. 1 to 4, 6 to 9, 11, 12).

- F.R.L.
- F.R.
- F (Filtr)
- R (Reg)
- L (Lub)
- Drain Separ
- Mech Press SW
- Res press exh valve
- SlowStart
- Anti-bac/Bac-remove Filtr
- Film Resist FR
- Oil-ProhR
- Med Press FR
- No Cu/ PTFE FRL
- Outdrs FRL
- Adapter Joiner Press Gauge
- CompFRL
- LgFRL
- PreclsR
- VacF/R
- Clean FR
- ElecPneuR
- AirBoost
- Speed Ctrl
- Silncr
- CheckV/ other
- Fit/Tube
- Nozzle
- Air Unit
- PresCompn
- Electro Press SW
- ContactSW
- AirSens
- PresSW Cool
- Air Flo Sens/Ctrl
- WaterRSens
- TotAirSys (Total Air)
- TotAirSys (Gamma)
- Gas generator
- RefrDry
- DesicDry
- HiPolymDry
- MainFiltr
- Dischrg etc
- Ending